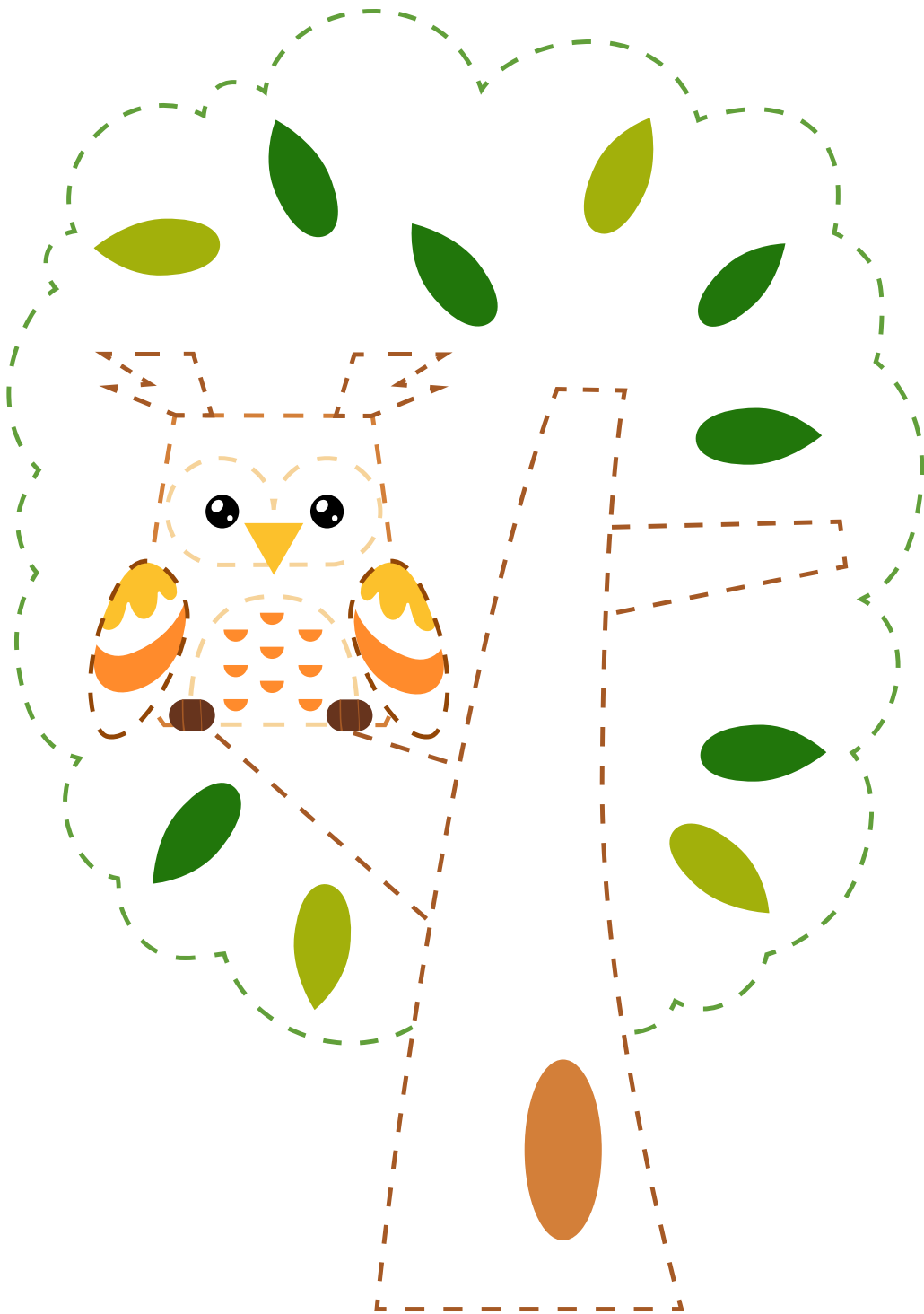
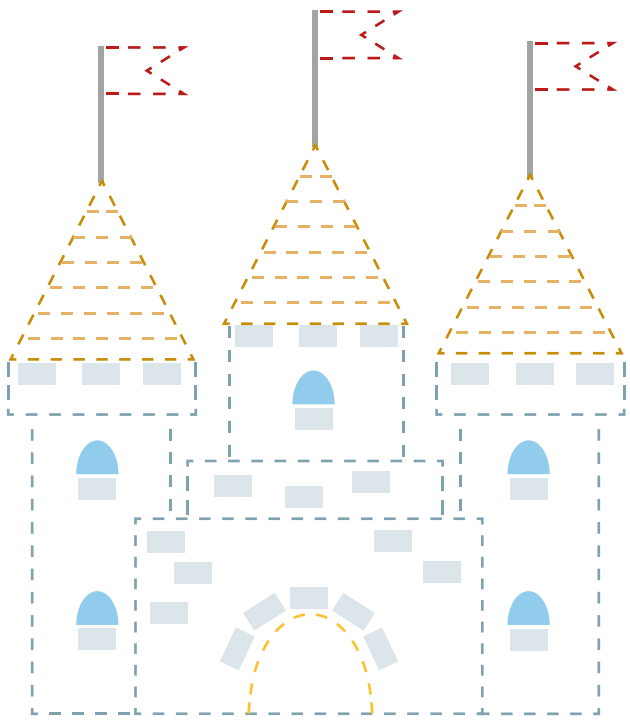




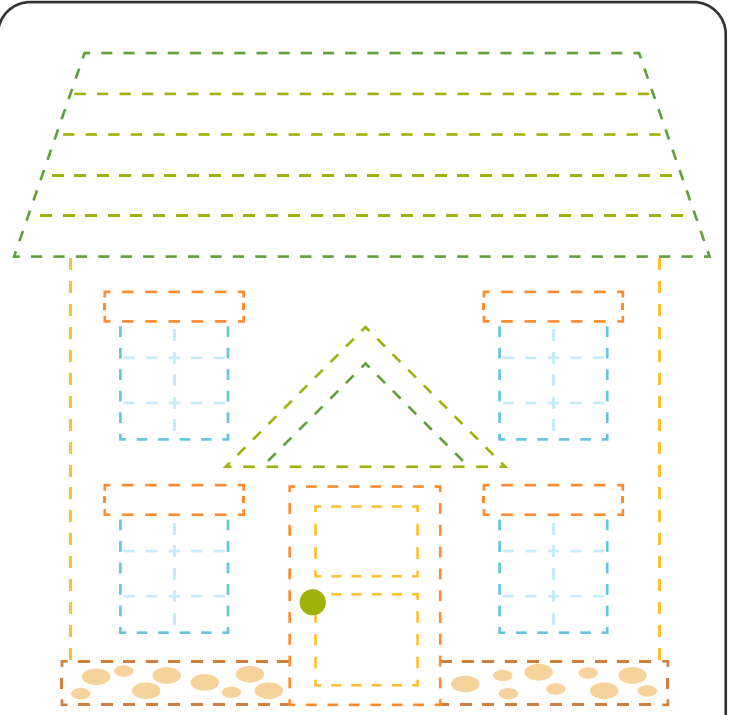
GRAPHISME

DESSINS EN POINTILLÉS

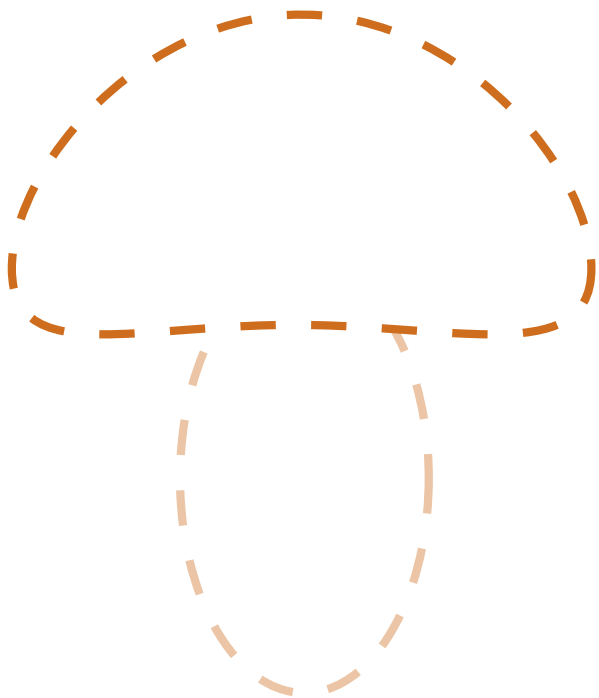




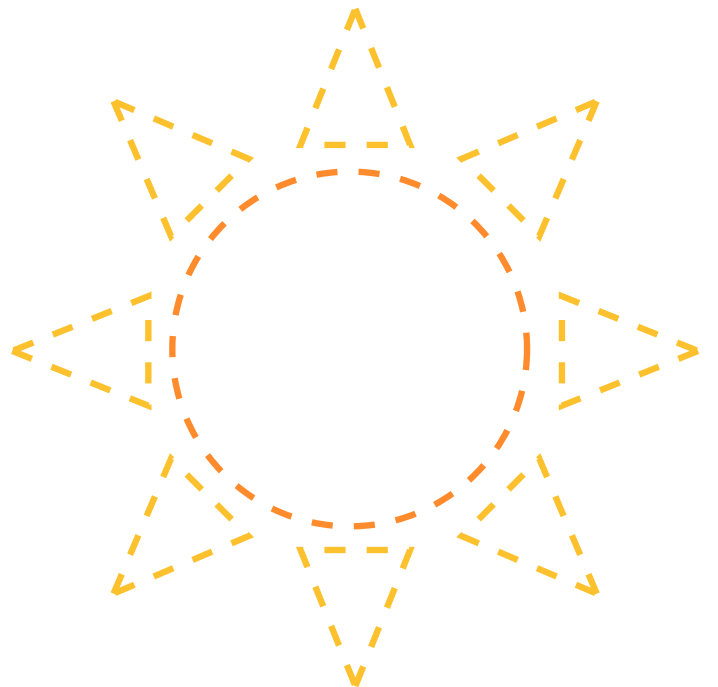
LE CHÂTEAU



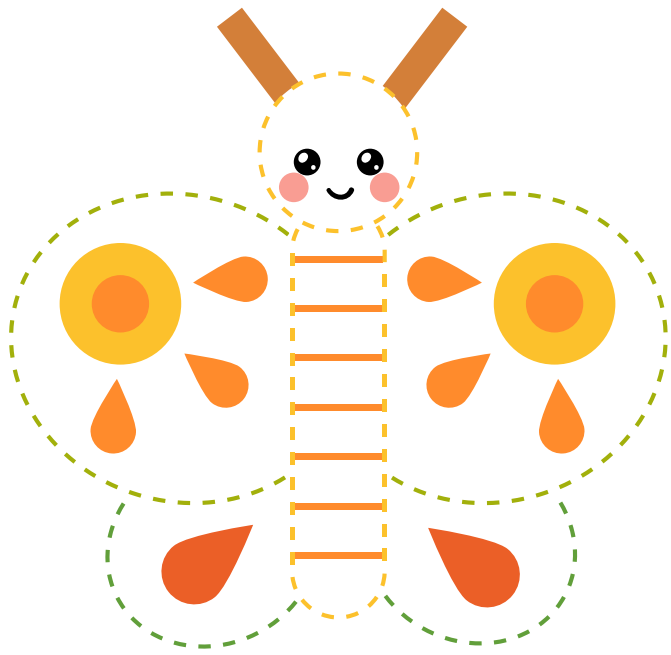
LA MAISON



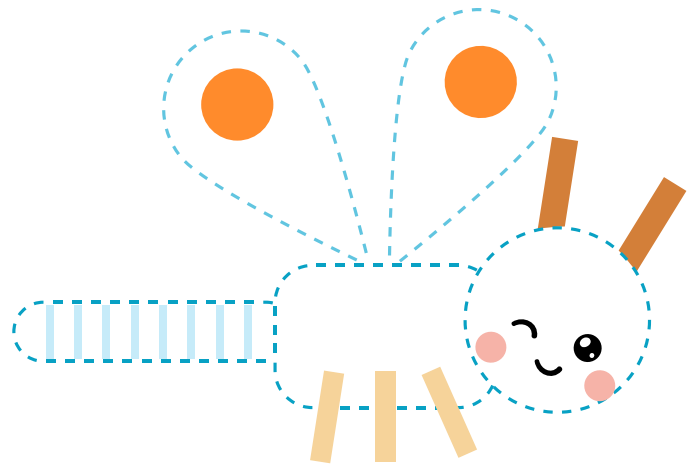
LE CHAMPIGNON



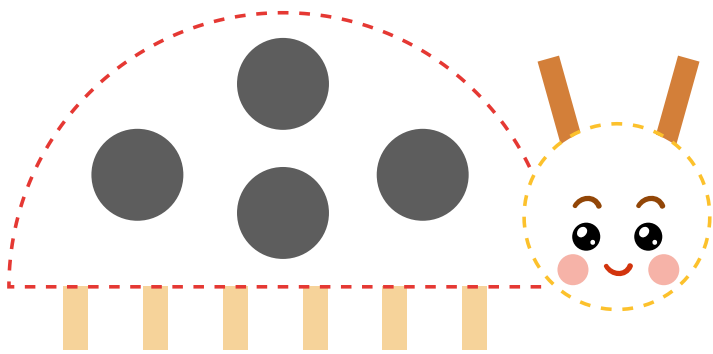
LE SOLEIL



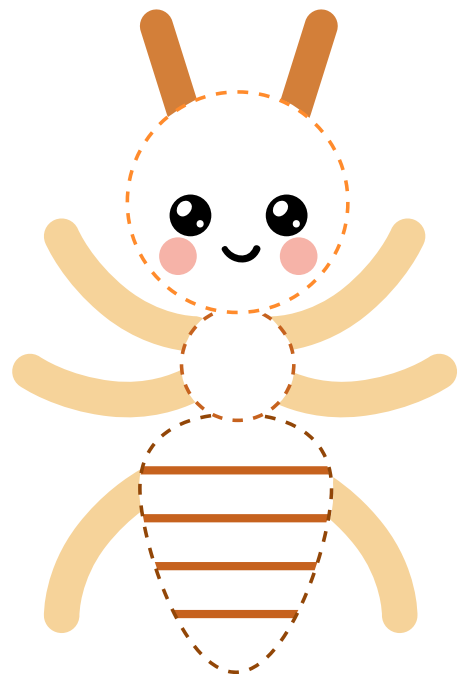
LE PAPILLON



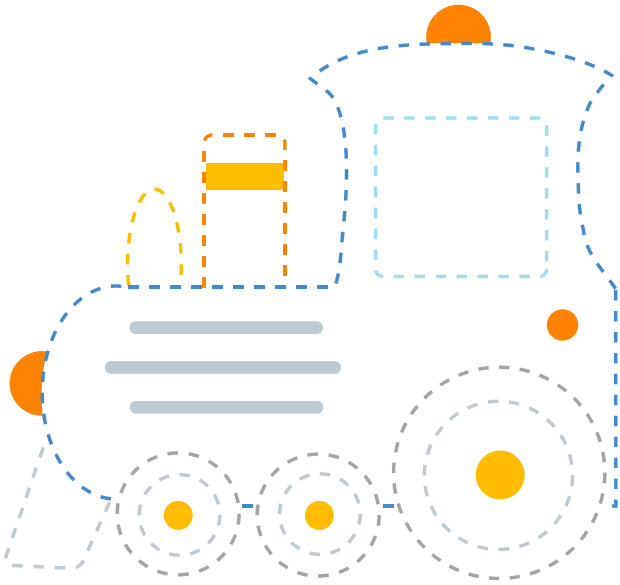
LA LIBELLULE



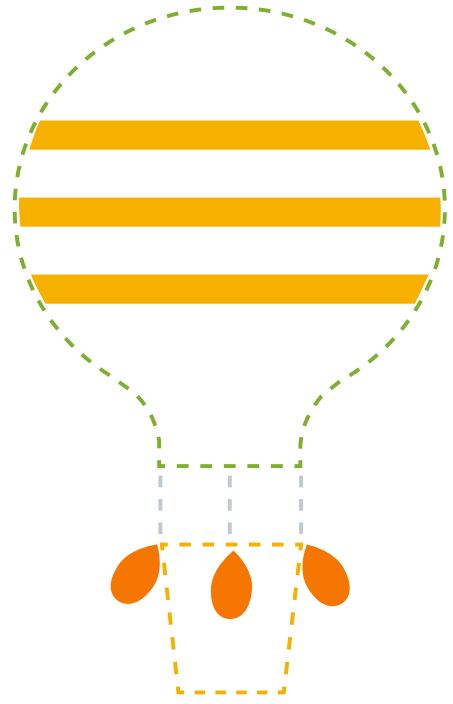
LA COCCINELLE



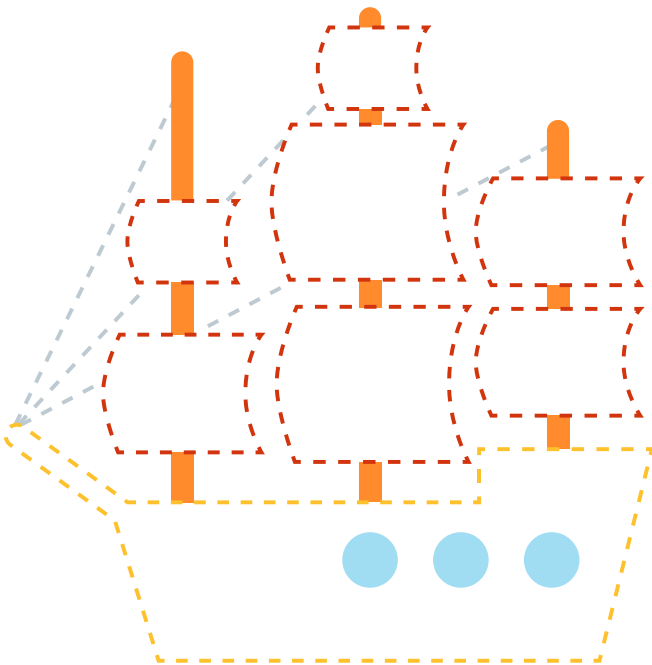
LA FOURMI



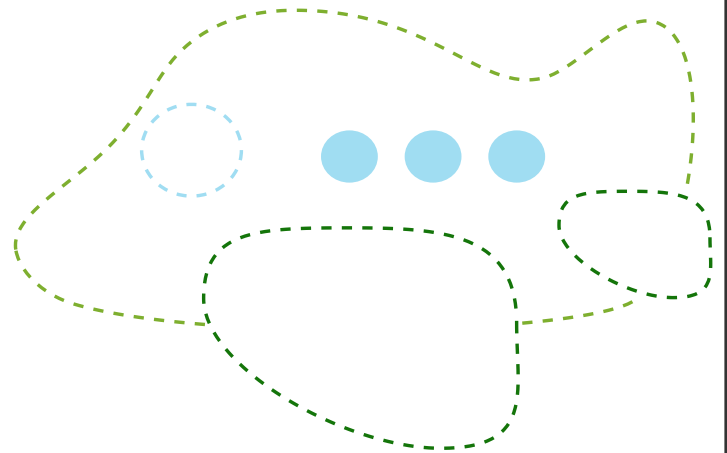
LA LOCOMOTIVE



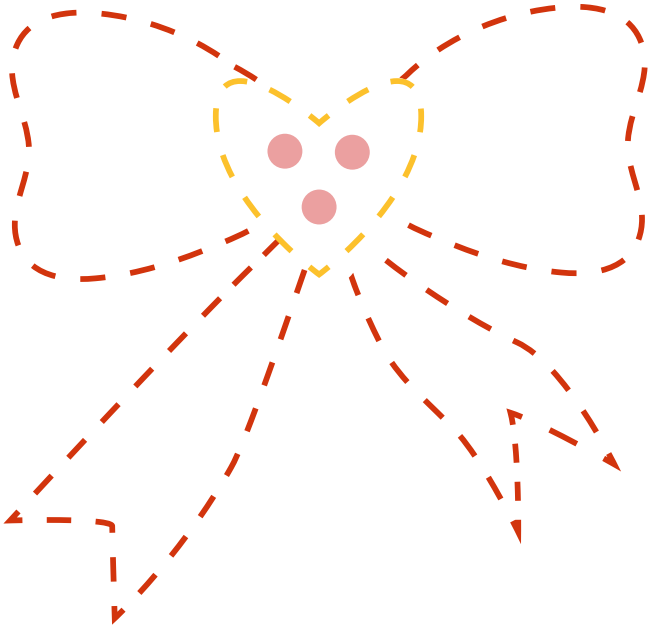
LA MONTGOLFIÈRE



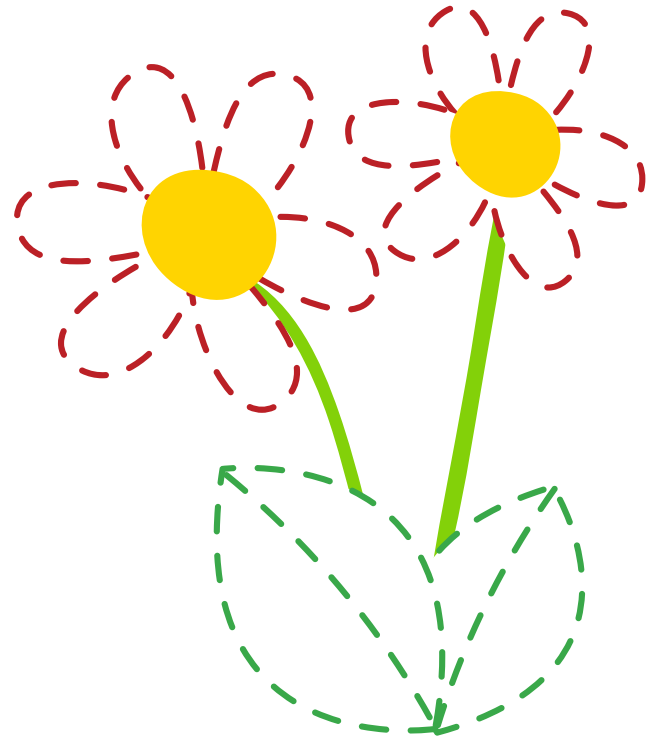
LE VOILIER



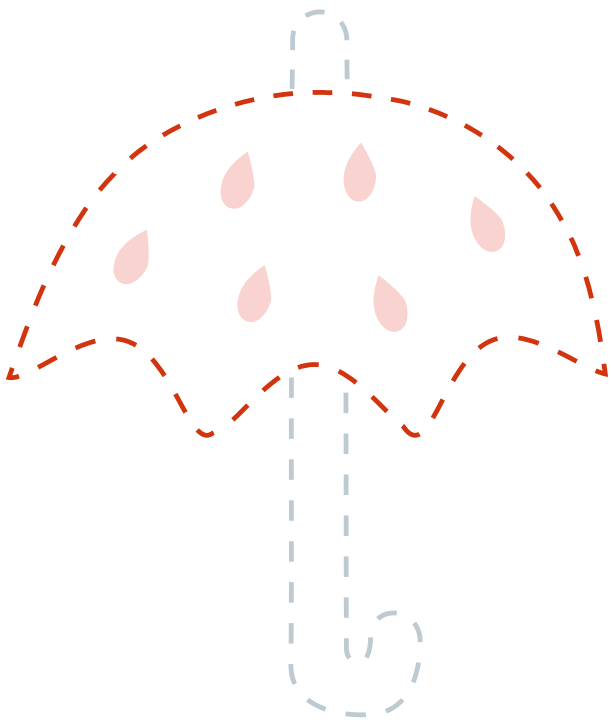
L'AVION



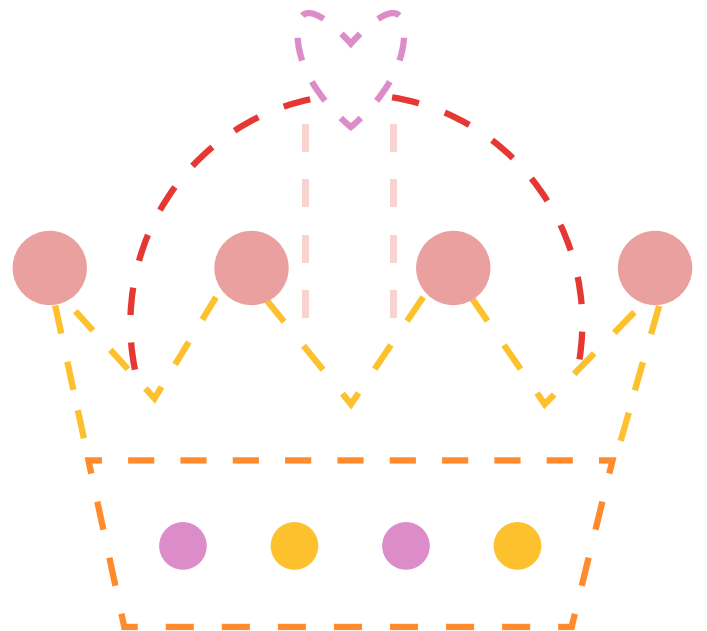
LE NŒUD



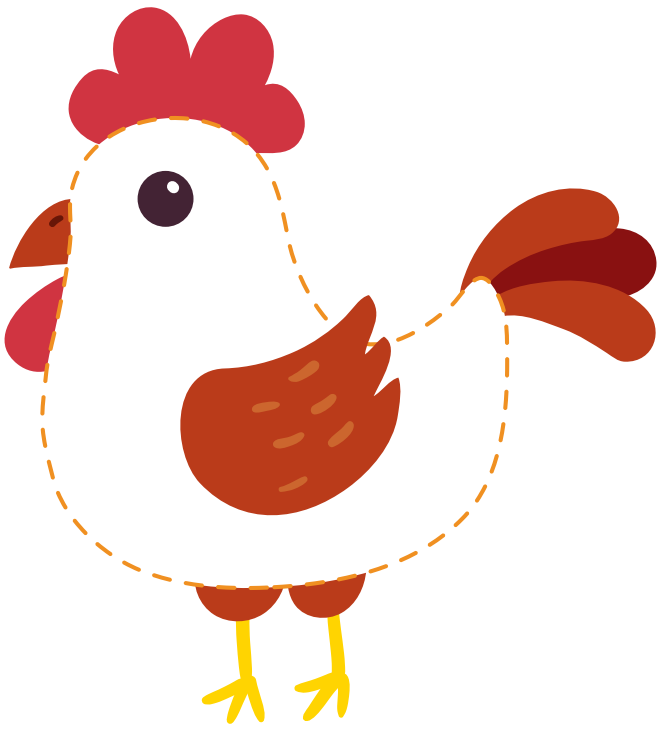
LES FLEURS



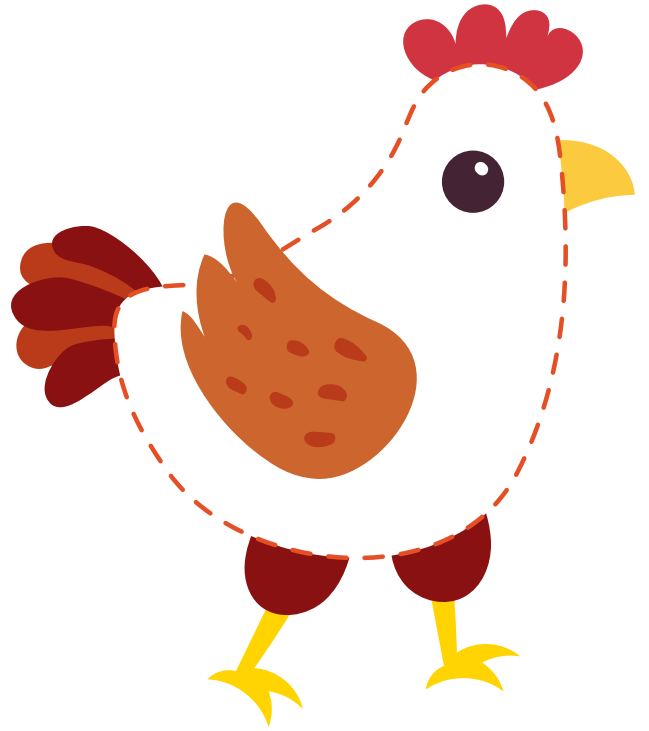
LE PARAPLUIE



LA COURONNE



LE COQ



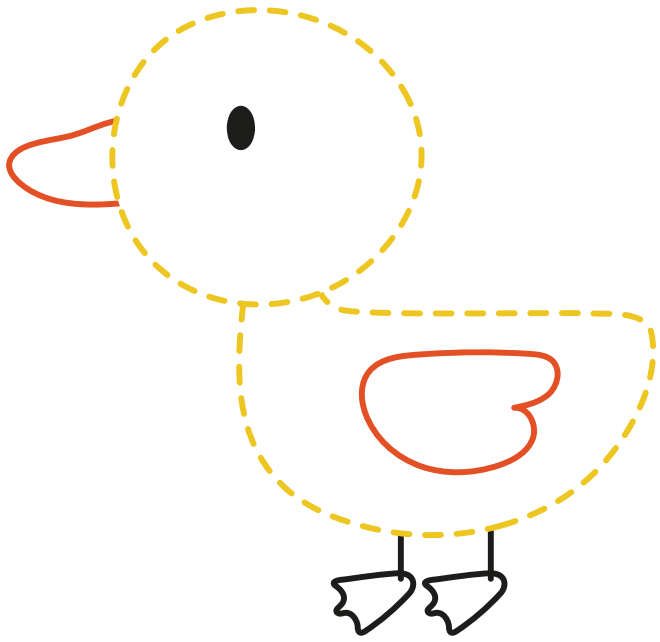
LA POULE



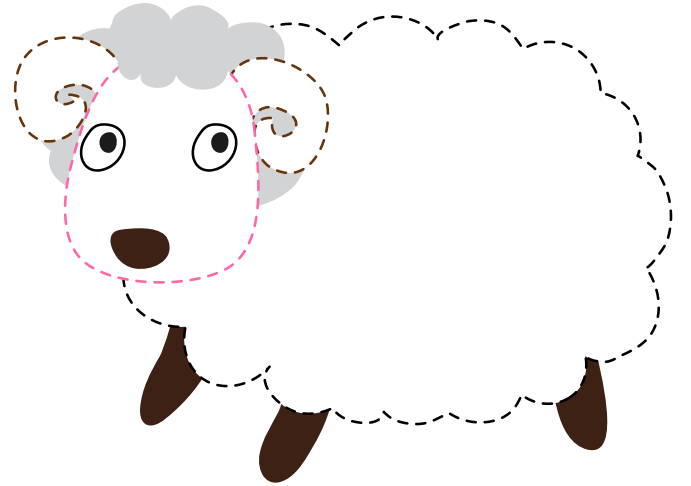
L'ŒUF



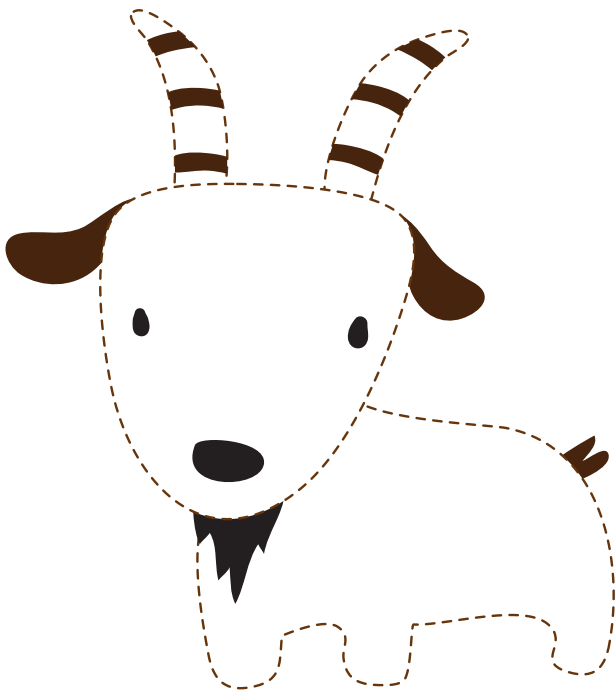
LE POUSSIN



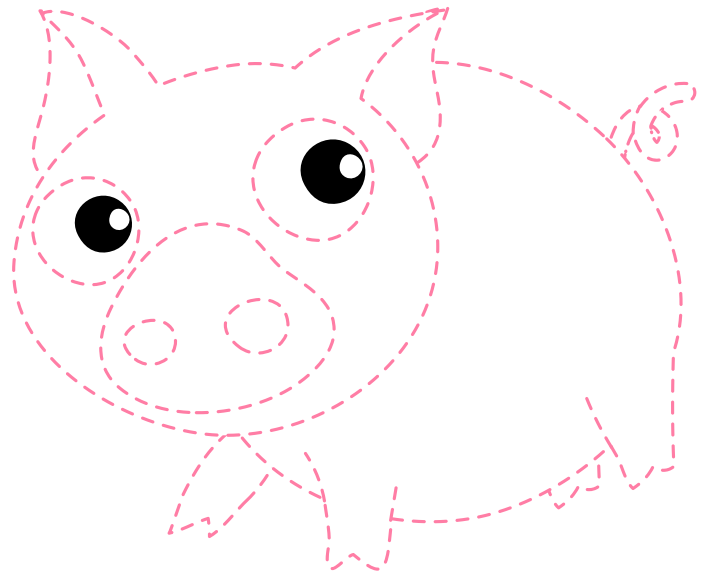
LE CANETON



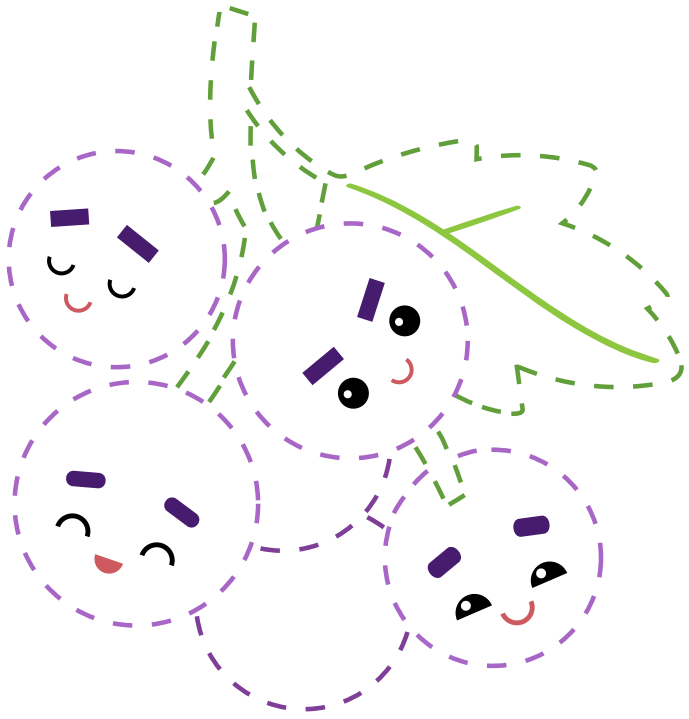
LE MOUTON



LA CHÈVRE



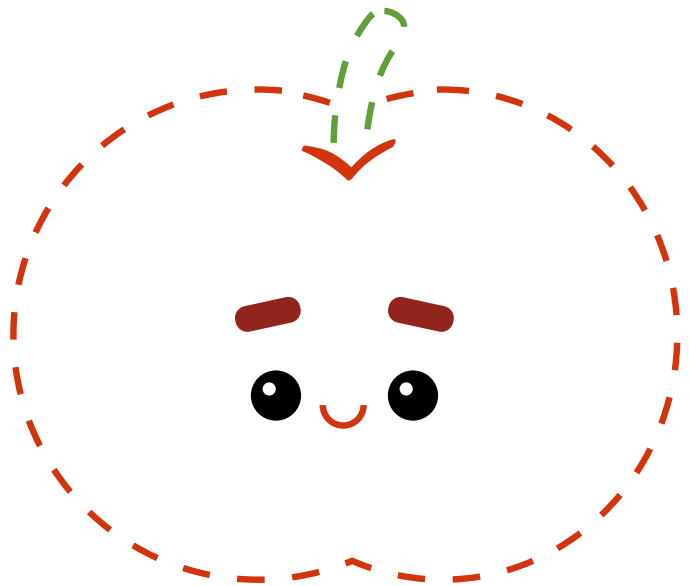
LE COCHON



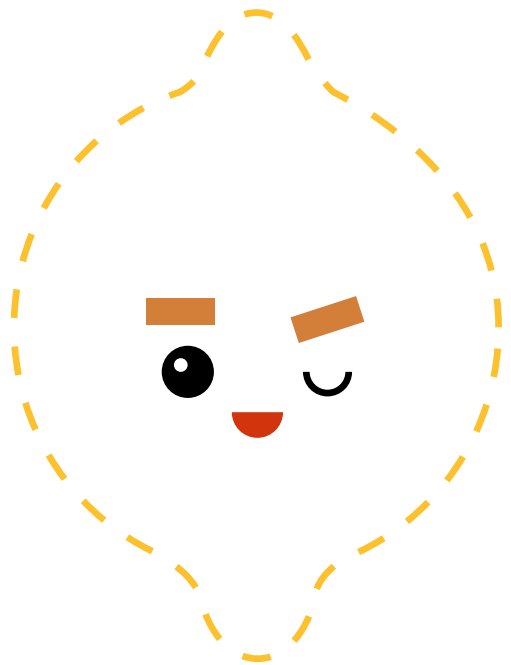
LE RAISIN



LA FRAISE

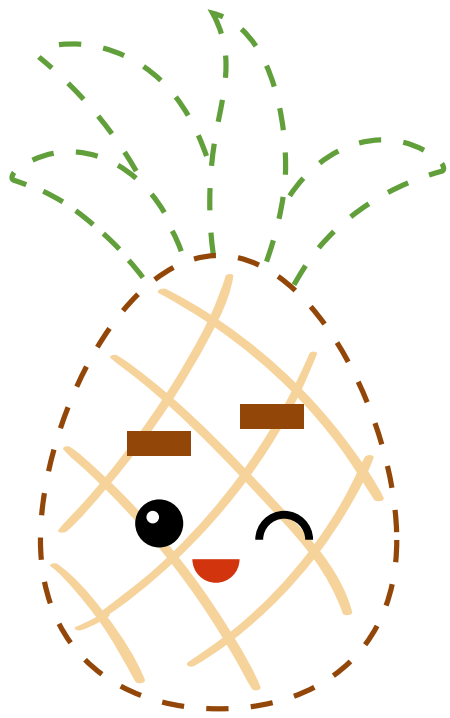


LA POMME

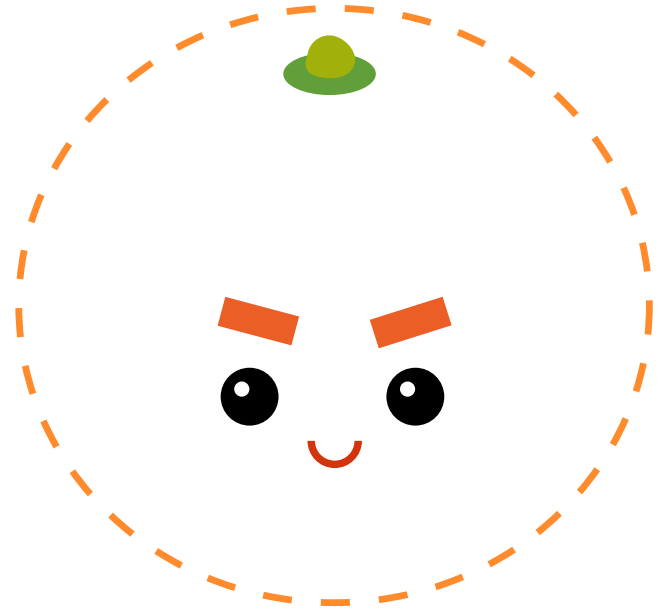


LE CITRON





L'ANANAS



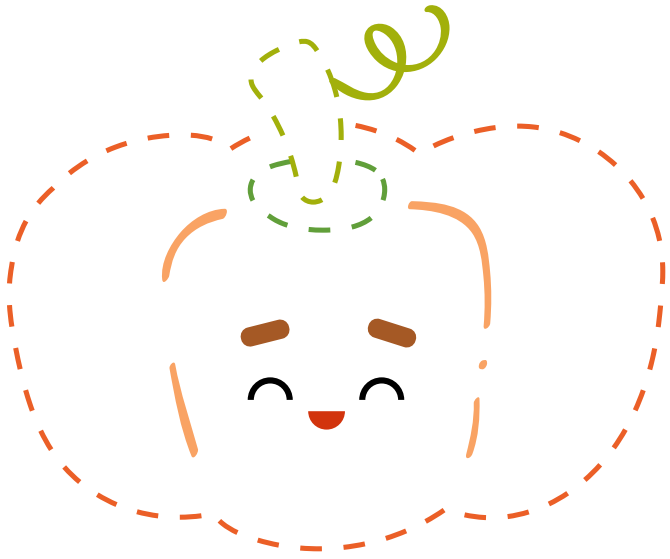
L'ORANGE



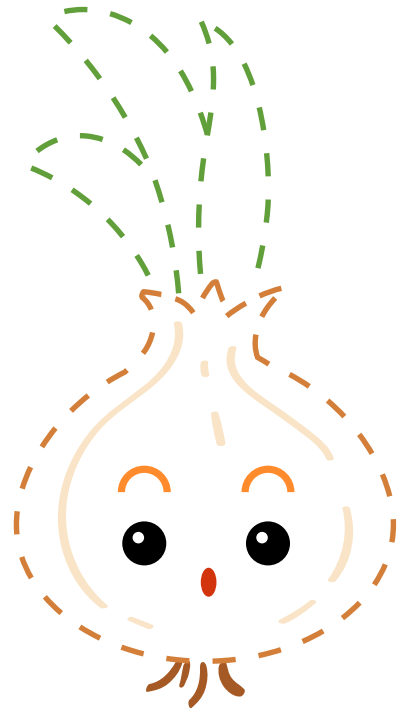
LA POIRE



LA PASTÈQUE



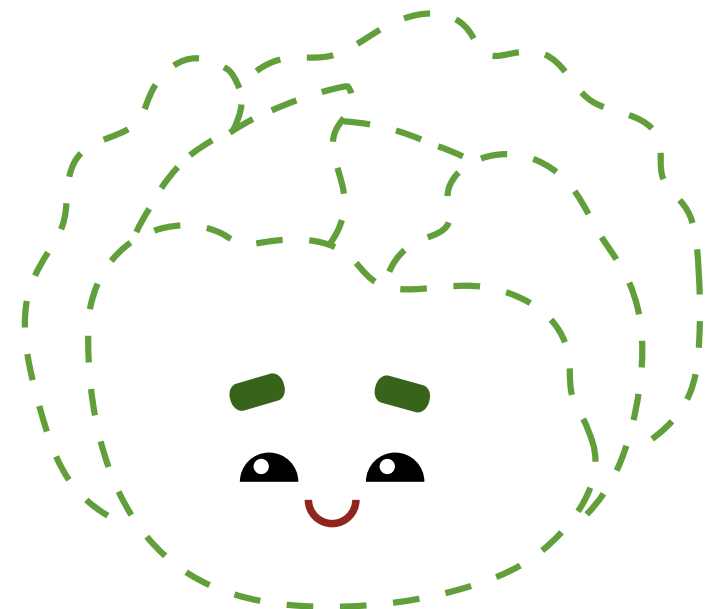
LE POTIRON



L'OIGNON



LE CONCOMBRE



LE CHOU